



**MOLDING
FUTURES**



Let's make imagination HAPPEN.

From learning letters to mixing colors to learning about our feelings, let's celebrate all that the Play-Doh brand can offer the world, from childhood and beyond.

GO FORTH AND PLAY!



narrative molding



★ set up

3-6 colors of Play-Doh compound

★ summary

Get your student's creativity flowing by asking them to design and write about a new species of animal.

★ directions

Using Play-Doh compound, ask students to use their imagination to create **a new species of animal** that doesn't currently exist. Through **Brainstorming, Creating and Sharing**, students will have the opportunity to design their animal, name it, decide it's habitat/environment and what it eats. Students will then **write a short narrative** about their new species describing its key features and traits.



Let's learn letters!



★ DIRECTIONS

Ask students to use Play-Doh compound to form **UPPER AND lower case letters**. Have students say each letter outloud while creating and even brainstorming things that begin with each letter.

BONUS: Have students combine letters to make sight words like go, that, cat, and more!



★ set up

Play-Doh Compound

optional: Play-Doh brand cutters and tools

★ summary

Use Play-Doh compound to support with learning letters and shapes.

SUBtraction SMASH!

★ set up

Play-Doh Compound

★ summary

Get your students working on 0-10 subtraction using Play-Doh modeling compound as a visual aid.



★ DIRECTIONS

Each student creates **10 PLAY-DOH BALLS TO START** and sets them up in their work area. Write a number on the board from 0-10 to subtract from the original 10 Play-Doh balls.

Students then “**smash**” the balls of doh and write out the subtraction equation to match.

BONUS: This activity can also be administered in reverse for addition equations! Have students reform smashed balls of doh to add to their original set.

★ **set UP**

Play-Doh Compound

★ **summary**

introduce the elements of 3D shapes by letting students bring them to life using Play-Doh compound



SHAPES in 3D

★ **DiREctions**

Using Play-Doh compound, ask students to create different **3D SHAPES**, such as **CYLINDERS, SPHERES, AND CUBES**. Discuss the differences between each shape's design and what makes each shape unique.

BONUS: Have students measure their shapes

slice of the Pie



★ set up

Play-Doh Compound
Plastic Utensils

★ summary

Use Play-Doh compound
to demonstrate fractions
in real life.

★ Directions

With Play-Doh compound, ask each student to **create their Best Pizza**. After 5-7 minutes, ask students to share their whole pizza. Then, ask students to use their plastic utensils to cut their pizza to share with 2 friends. Students then assess what **fraction of Pizza** they have remaining. At the end, squish Play-Doh compound back into one ball and recreate again with different sharing parameters to demonstrate different fractions.





SOLAR systems

★ set up

1 Can of Play-Doh

★ summary

Use Play-Doh Compound to bring space concepts to life.

★ directions

Using Play-Doh compound, ask students to **create each of the planets** in our solar system and **earth's moon phases**. Using different color compounds, bring your models to life as realistically as possible.



Build the Strongest Shelter



★ set up

Play-Doh compound
Popsicle sticks, construction
paper, hairdryer/fan, water

★ summary

Challenge your students
to put their STEM skills to
work to build the strongest
hurricane shelter.

★ Directions

Students design their hurricane shelter on
paper and the **Build it** using the supplied
materials. **each design is tested** with a
hairdryer/fan and water deluge to see **WHICH
is the strongest**. Students then assess the
performance of their shelters to understand why
it worked or didn't.



CREATURE- OLOGISTS



★ set up

Rolling Pin

★ time

~5-15 minutes

★ summary

Kids act as Creatureologists, make, and discover animal prints!

★ watch outs

Make sure kids don't choose their own prints!

★ script

Have everyone use a rolling pin to **make a flat circle** - not too thick, about the size of your hand.

Now have the students create a paw print of some kind of creature. **there are no rules**, you can imagine any creature you like, real or imagined and put its paw print into the Play-Doh compound.

Ask students to take the print and put it somewhere around the room and come back to their desks (this could be on one surface or if space allows they can put them in different places).

you are now about to become..

creatureologists! task student to discover the new and exciting creatures. Once they have discovered **a print that interests them**, have students bring it back to their desk. make sure it's not the one they personally made!

study the print and think about the creature that made it. What might that creature look like? Does it have claws, fur, wings, teeth? How big is it?

optional: share a story with the group about the creature, where has it come from?!



COLOR mixing

★ set up

Play-Doh compound in red, yellow, and blue (primary colors)

★ summary

Introduce students to primary colors and the art of color mixing.

★ DIRECTIONS

Each student receives **RED, YELLOW AND BLUE** Play-Doh compound. Ask students to discuss as a class what they think will happen when they **MIX 2 OF THE COLORS**. Then have each student mix and discuss the outcomes.

BONUS: Now, task students to make specific colors. How would you go about making the color green with the three colors in front of you?



music monsters

★ set up

Select an interesting piece of music - something that has a tone and mood

★ summary

Players imagine what a song would be like if it came to life as a monster.

★ time

~5-15 minutes

★ directions

Play the students **a piece of music**, and encourage them to **close their eyes and really feel the music**.

Have the students open their eyes and **imagine that piece of music came to life** and took the form of a monster!

Play the music again, and this time, have the students **create a monster** that represents the music.

OPTIONAL - Ask **HOW** the monster moves. **MOVE AND ROLE-PLAY** as if you are the monster characters.



FUNNY Hats



★ set up

Stand up, working individually.

★ summary

Kids make unique hats and invent a character inspired by the hat.

★ time

~5-15 minutes

★ Directions

Provide the **same amount of PLAY-DOH** compound and the **same COLOR** to each student.

Have each student **make a FUNNY hat** - show previously made hat as an example.

Have the students **HOLD UP their Hats and Reintroduce themselves as a completely different character** who would wear this hat (leader demo and select confident child to go next). Ask questions to dive deeper into the character. Does your character have a name? What does your character look like?

★ **set up**

leader makes some faces around the room in advance of activity.

Make a long line of smaller blobs of Play-Doh compound on a table in a variety of colors (out of cans and pre-rolled).

★ **summary**

looking for faces in everyday objects/environments and bringing them to life with Play-Doh product.

★ **time**

~8-25 minutes



FINDING FACES



★ **Directions**

Create faces out of everyday classroom objects. Ask students walk around the room and **FIND faces made out of every day objects** - remind students to look but leave them where they are.

REGROUP - Invite the students to explain what they saw as they walked around the classroom.

Explain how you used what was in the room to look for faces. Using our imagination, we see things differently. **BY USING PLAY-DOH** compound to make eyes, mouths, and noses, we can bring every day items to life!

NOW it's their turn. Have students walk around the room and look at everything with new eyes. **WHAT COULD BE a face?** Can you notice something that could have personality or be a character? When they've found something, have the students use Play-Doh compound to make their own face.

seasonal

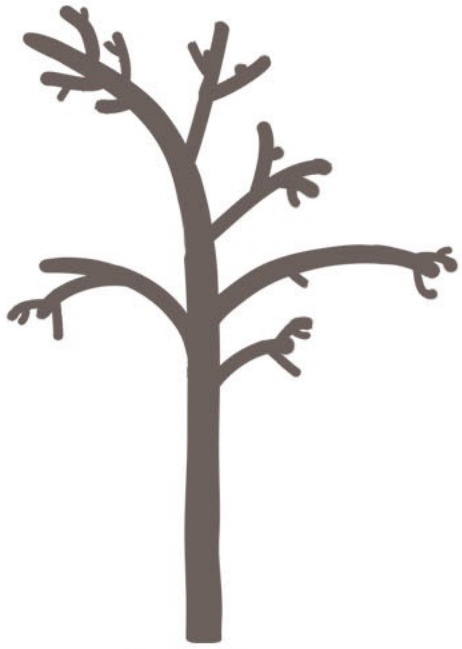


THE FOUR SEASONS

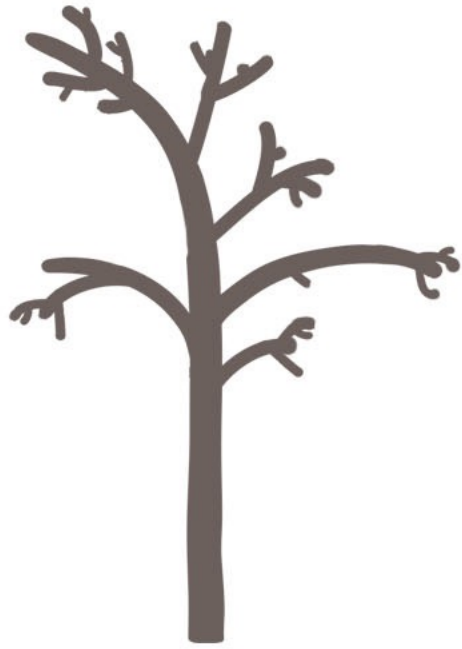


★ DIRECTIONS

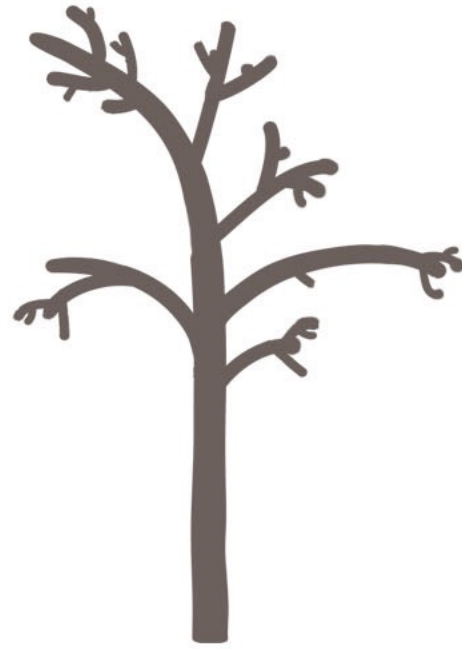
CREATE A TREE FOR EACH OF THE FOUR SEASONS USING PLAY-DOH COMPOUND



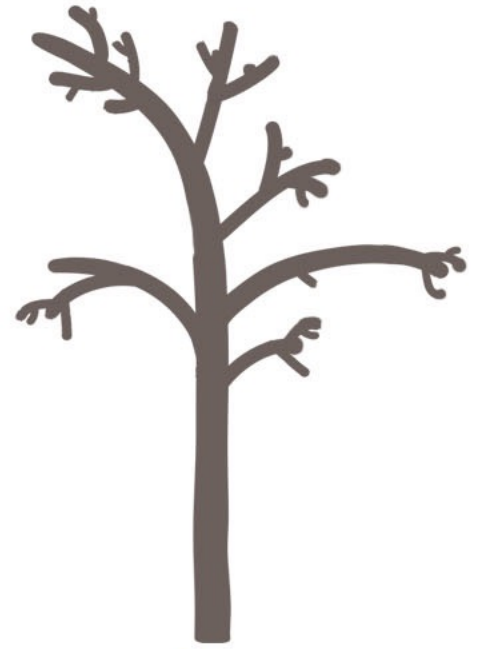
Winter



Spring



Summer



autumn